



CONSERVATION PLANTING COMPONENTS

*Bolt-on attachments to improve your
Fertilizer, Seed and Residue Management*

www.greatplainsmfg.com

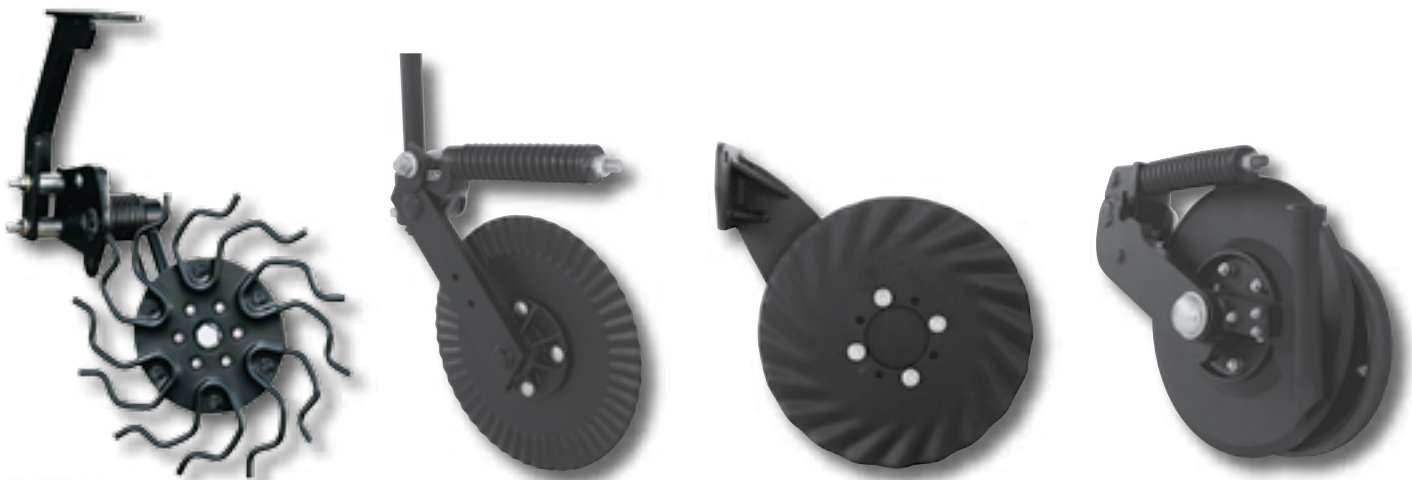
PLANTING & TILLAGE

from
Great Plains

TABLE OF CONTENTS

Vantage II Fertilizer Coulter	3
Vantage I Fertilizer Coulter	4
Vantage I-20 Fertilizer Coulter	5
Heavy-Duty Unit Mount Conservation Coulter	6
Zone Coulter	7
Heavy-Duty Utility Coulter	8
Flat Fold Markers	9
Coil Tine Conversion Kits	10
Terra-Tine™ Row Cleaner	11
Planter Seed-Lok®	12
The Eliminator	13
Mounting Accessories	14

* For current prices, see Planting Components Price List insert.

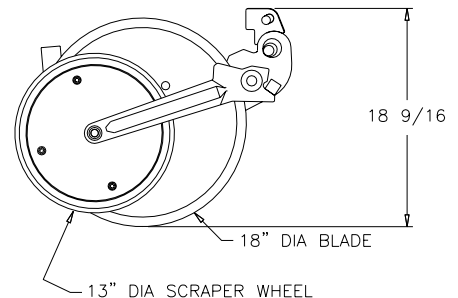
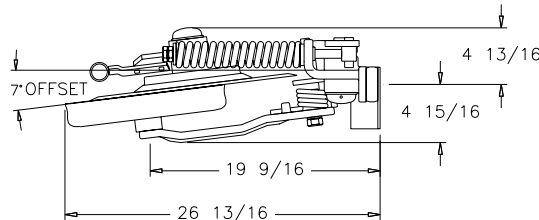


VANTAGE II FERTILIZER COULTER

AVAILABLE TO FIT VIRTUALLY ANY PLANTER OR TOOLBAR!

Features

- Can be used for liquid or dry fertilizer
- Designed for applications of fertilizer in no-till, minimum-till and conventional planting conditions
- Eliminates constant plugging and adjustments
- Increased Down-Pressure
 - 430 pounds preload
 - 1100 pounds maximum
- Spring-Loaded wiper wheel
- Arm pivot utilizes hub assembly with tapered roller bearings
- Heavy-Duty 18" smooth coultter blade
- Heavy-Duty casting and spring assembly
- Heavy-Duty greasable hub
- Double-Lipped grease seal



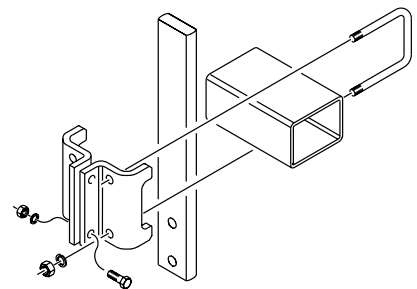
Vantage II Fertilizer Coulter (base unit)

Part No.	Description	Weight
204-218L	Vantage II Fertilizer Coulter RH	93 lbs.
204-219L	Vantage II Fertilizer Coulter LH	93 lbs.
890-580C	Vantage II Liquid Insert	1 lb.

Note: Price of clamp kits and shanks are not included in base unit. Order one of each to complete coulter.

Mounting Clamp Kits

Part No.	Description	Weight
204-220K	Fits 2.5" X 2.5" square bar	6 lbs.
204-221K	Fits 3" X 3" square bar	6 lbs.
204-222K	Fits 4" X 4" square bar	8 lbs.
204-223K	Fits 2" w X 6" h bar	13 lbs.
204-224K	Fits 7" X 7" square bar	11 lbs.
204-225K	Fits 3" X 3" diamond bar	16 lbs.
204-226K	Fits 3.5" X 3.5" diamond bar	18 lbs.
204-227K	Fits 6" w X 4" h bar	8 lbs.
204-228K	Fits 5" w X 7" h bar	11 lbs.
204-243K	Fits 3" w X 7" h bar	10 lbs.
204-244K	Fits 3" w X 4" h bar	9 lbs.
204-341K	Fits 3" w X 6" h bar	9 lbs.



Shank Length

Part No.	Description	Weight
807-124C	21" Flat shank Also can be used as a 16° angle mount for toolbars	19 lbs.
820-181C*	Vantage II 5" Offset Flat Shank – RH	14 lbs.
820-182C*	Vantage II 5" Offset Flat Shank – LH	14 lbs.

* **Note:** For use on White front fold planters

If space is restricted for mounting units on toolbar, see page 14 for extension brackets.

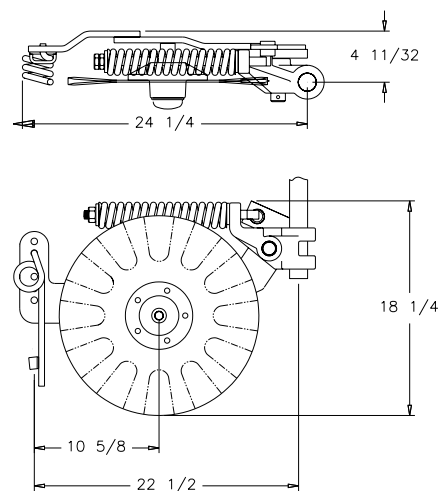
VANTAGE I FERTILIZER COULTER

AVAILABLE TO FIT VIRTUALLY ANY PLANTER OR TOOLBAR!



Features

- For low pressure fertilizer injection
- Increased Down-Pressure
 - 480 pounds preload
 - 1100 pounds maximum
- Heavy-Duty swivel casting and spring assembly
- Heavy-Duty greasable hub
- Double-Lipped grease seal
- Tapered roller bearings
- Swivel Capability
- Steel swivel limit collar
- Non-Plugging coil tine applicator
- Stainless steel nozzle assembly
- Can be used with any type of pump
- On row or off row application
- Can be used in conjunction with Great Plains Terra-Tine



Vantage I Fertilizer Coulter (base unit)

Part No.	Description	Weight
204-368L	Vantage I Fertilizer Coulter RH	60 lbs.
204-369L	Vantage I Fertilizer Coulter LH	60 lbs.

Order nozzles separately on page 15 **Note:** To add Terra-Tine see Page 11.

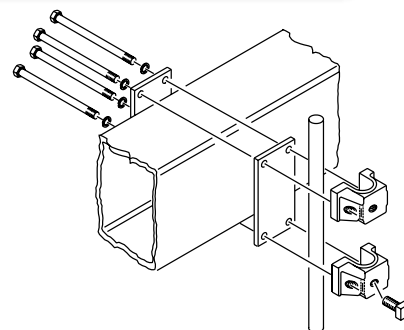
Note: Price of blades, clamp kits, shanks and nozzles are not included in base unit. Order one of each to complete coulter.

Coulter Blades

Part No.	Description	Weight
820-018C	Narrow Fluted Blade – 17"	9 lbs.
820-082C	3/4" 12 Wave Blade – 17"	12 lbs.
820-156C	5/8" Turbo Coulter Blade (Patented) – 17"	12 lbs.
820-215C	5/8" Turbo Coulter Blade (Patented) – 18"	14 lbs.
820-220C	18" 3/4 Wave Coulter Blade	14 lbs.

Mounting Clamp Kits

Part No.	Description	Weight
204-017K	Fits 2.5" X 2.5" square bar	9 lbs.
204-018K	Fits 2" w X 6" h bar	12 lbs.
204-019K	Fits 3" X 3" diamond bar	16 lbs.
204-020K	Fits 3.5" X 3.5" diamond bar	17 lbs.
204-021K	Fits 4" X 4" square bar	11 lbs.
204-022K	Fits 3" w X 7" h bar	13 lbs.
204-023K	Fits 5" w X 7" h bar	14 lbs.
204-024K	Fits 7" X 7" square bar	14 lbs.
204-053K	Fits 3" w X 4" h bar	10 lbs.
204-054K	Fits 6" w X 4" h bar	11 lbs.
204-060K	Fits 2" w X 4" h bar	11 lbs.
204-064K	Fits 3" X 3" square bar	9 lbs.
204-340K	Fits 3" w X 6" h bar	12 lbs.

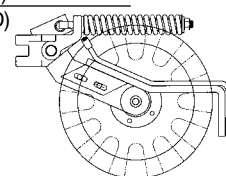


Shank Length

Part No.	Description	Weight
204-013D	1 1/2" X 26" Straight Shank	13 lbs.
204-024D	1 1/2" X 12 5/8" Straight Shank	6 lbs.
204-025D	1 1/2" X 16" Straight Shank	8 lbs.
204-026D	1 1/2" X 22" Straight Shank	11 lbs.
820-132C	1 1/2" X 22" - 5" Offset Shank	13 lbs.
820-133C	1 1/2" X 26" - 5" Offset Shank	15 lbs.
820-183C	1 1/2" X 22" - 7" Offset Shank	17 lbs.

Vantage I Fertilizer Coulter Conversion Kits

Part No.	Description
204-440K	Vantage I LH Liq. Fertilizer (ROD)
204-441K	Vantage I RH Liq. Fertilizer (ROD)



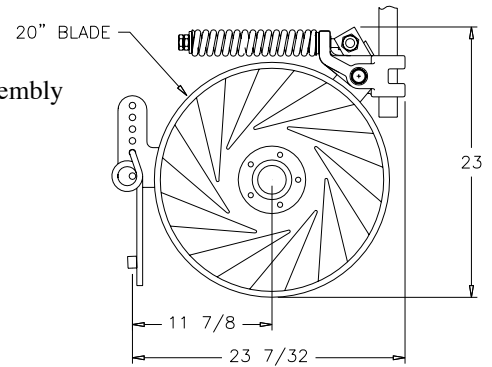
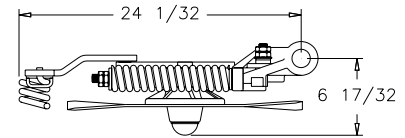
VANTAGE I-20 FERTILIZER COULTER

AVAILABLE TO FIT VIRTUALLY ANY TOOLBAR!

Fits fertilizer toolbars. Not recommended for Planters.

Features

- For low pressure fertilizer injection
- Heavy Duty 20" design for application of liquid fertilizer for toolbars
- Increased Down-Pressure
 - 480 pounds preload
 - 1100 pounds maximum
- Heavy-Duty swivel casting and spring assembly
- Heavy-Duty greasable hub
- Double-Lipped grease seal
- Tapered roller bearings
- Swivel Capability
- Steel swivel limit collar
- Non-Plugging coil tine applicator
 - Eliminates troublesome knife
- Stainless steel nozzle assembly
- Can be used with any type of pump



Vantage I-20 Fertilizer Coulter (base unit)

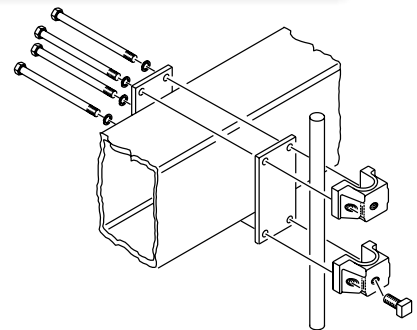
Part No.	Description	Weight
204-324L	Utility Coulter RH only – Add one of the following fertilizer kits for Vantage I-20	46 lbs.
Note: To add Terra Tine see Page 11. Order nozzles separately on page 15. Price of blades, clamp kits, shanks and nozzles are not included in base unit. Order one of each to complete coulter.		

Coulter Blades

Part No.	Description	Weight
820-074C	Narrow Fluted Blade — 20"	15 lbs.
820-115C	1" 13 Wave Blade — 20"	17 lbs.
820-180C	5/8" Turbo Coulter Blade (Patented) — 20"	17 lbs.

Mounting Clamp Kits

Part No.	Description	Weight
204-017K	Fits 2.5" X 2.5" square bar	9 lbs.
204-018K	Fits 2" w X 6" h bar	12 lbs.
204-019K	Fits 3" X 3" diamond bar	16 lbs.
204-020K	Fits 3.5" X 3.5" diamond bar	17 lbs.
204-021K	Fits 4" X 4" square bar	11 lbs.
204-022K	Fits 3" w X 7" h bar	13 lbs.
204-023K	Fits 5" w X 7" h bar	14 lbs.
204-024K	Fits 7" X 7" square bar	14 lbs.
204-053K	Fits 3" w X 4" h bar	10 lbs.
204-054K	Fits 6" w X 4" h bar	11 lbs.
204-064K	Fits 3" X 3" square bar	9 lbs.
204-340K	Fits 3" w X 6" h bar	12 lbs.

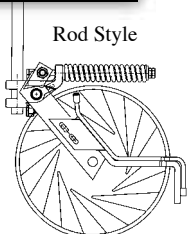


Shank Length

Part No.	Description	Weight
204-013D	1 1/2" X 26" Straight Shank	13 lbs.
204-026D	1 1/2" X 22" Straight Shank	11 lbs.
820-132C	1 1/2" X 22" - 5" Offset Shank	13 lbs.
820-133C	1 1/2" X 26" - 5" Offset Shank	15 lbs.
820-183C	1 1/2" X 22" - 7" Offset Shank	17 lbs.

Vantage I-20 Fertilizer Coulter Conversion Kits

Part No.	Description	Weight
204-409K	Clamp-on Fertilizer Conversion Kit - Anhydrous	18 lbs.
204-433K	Bolt-On Fertilizer Conversion Kit - Liquid	33 lbs.
204-435K	Rod Style Fertilizer Conversion Kit	7 lbs.



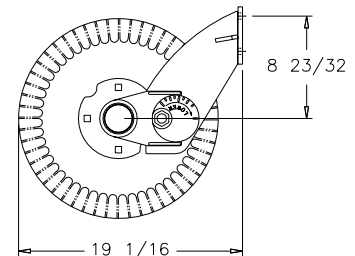
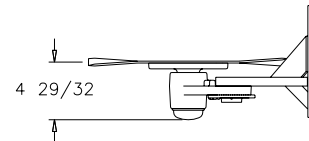
If space is restricted for mounting units on toolbar, see page 14 for extension brackets.

HEAVY-DUTY UNIT MOUNT CONSERVATION COULTER



Features

- Mounts on planter unit for conservation to no-till
- Fits John Deere, White 6100 and Kinze planters
- Available in right and left hand models
- Unique cam adjustment for depth control
- Heavy-Duty greasable hub
- Double-Lipped grease seal
- Tapered roller bearings



Unit Mount Coulter (base unit)

Part No.	Description	Weight
204-123L	RH – Fits Great Plains (Except YP), John Deere Maximerge / Maximerge Plus	45 lbs.
204-128L	RH – Fits John Deere 7000, 7100, Kinze and White 6100	45 lbs.
204-129L	LH – Fits John Deere 7000, 7100, Kinze and White 6100	45 lbs.
204-130L	LH – Fits Great Plains (Except YP), John Deere Maximerge / Maximerge Plus	45 lbs.

Note: Price of blades and spring packages are not included in base unit. Order one of each to complete coultter.

Coulter Blades

Part No.	Description	Weight
820-018C	Narrow Fluted Blade – 17"	9 lbs.
820-082C	3/4" 12 Wave Blade – 17"	12 lbs.
820-156C	5/8" Turbo Coulter Blade (Patented) – 17"	12 lbs.
820-205C	5/8" Turbo Coulter Blade (Patented) – 16"	11 lbs.
820-326C	Coulter Blade (Fluted) – 16"	8 lbs.
820-327C	Coulter Blade (Turbo) – 15"	11 lbs.
820-331C	Coulter Blade (Fluted) – 15"	7 lbs.



Turbo Coulter



3/4" x 17"
12 Flutes



5/8" x 17"
24 Flutes

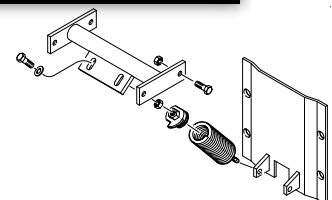


5/16" x 17"
50 Flutes

Spring Package

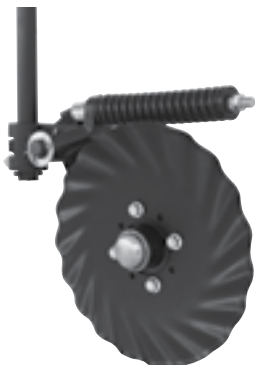
Part No.	Description	Weight
204-006K*	Spring Package – Fits John Deere 7000, 7100 and Kinze	30 lbs.
204-113K	Spring Package – Fits John Deere 7200, 7300	30 lbs.

***Note:** Spring package adds up to 300 pounds of additional down pressure and is required in most no-till conditions.



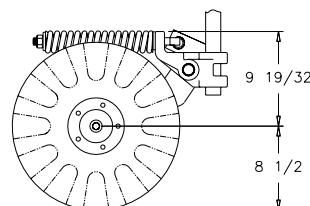
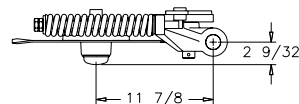
ZONE COULTER

AVAILABLE TO FIT VIRTUALLY ANY PLANTER OR TOOLBAR!



Features

- Available in right and left hand coulter
- Increased Down-Pressure
 - 480 pounds preload
 - 1100 pounds maximum
- Heavy-Duty swivel casting and spring assembly
- Heavy-Duty greasable hub
- Double-Lipped grease seal
- Tapered roller bearings
- Swivel Capability
- Steel swivel limit collar
- Easily converts to a Vantage I



Zone Coulter (base unit)

Part No.	Description	Weight
204-417K	Zone Coulter RH	46 lbs.
204-418K	Zone Coulter LH	46 lbs.

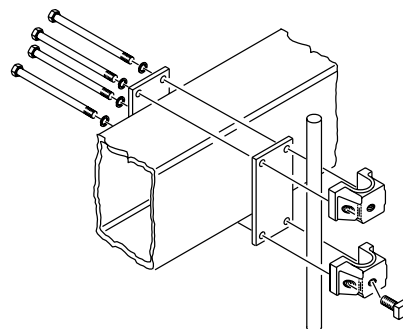
Note: Price of blades, clamp kits, and shanks are not included in base unit. Order one of each to complete coulter.

Coulter Blades

Part No.	Description	Weight
820-018C	Narrow Fluted Blade – 17"	9 lbs.
820-082C	3/4" 12 Wave Blade – 17"	12 lbs.
820-156C	5/8" Turbo Coulter Blade (Patented) – 17"	12 lbs.
820-205C	5/8" Turbo Coulter Blade (Patented) – 16"	11 lbs.
820-215C	5/8" Turbo Coulter Blade (Patented) – 18"	14 lbs.
820-220C	18" 3/4 Wave Coulter Blade	14 lbs.
820-326C	Coulter Blade (Fluted) – 16"	8 lbs.
820-327C	Coulter Blade (Turbo) – 15"	11 lbs.
820-331C	Coulter Blade (Fluted) – 15"	7 lbs.

Mounting Clamp Kits

Part No.	Description	Weight
204-017K	Fits 2.5" X 2.5" square bar	9 lbs.
204-018K	Fits 2" w X 6" h bar	12 lbs.
204-019K	Fits 3" X 3" diamond bar	16 lbs.
204-020K	Fits 3.5" X 3.5" diamond bar	17 lbs.
204-021K	Fits 4" X 4" square bar	11 lbs.
204-022K	Fits 3" w X 7" h bar	13 lbs.
204-023K	Fits 5" w X 7" h bar	14 lbs.
204-024K	Fits 7" X 7" square bar	14 lbs.
204-053K	Fits 3" w X 4" h bar	10 lbs.
204-054K	Fits 6" w X 4" h bar	11 lbs.
204-064K	Fits 3" X 3" square bar	9 lbs.
204-340K	Fits 3" w X 6" h bar	12 lbs.
204-060K	Fits 2" w X 4" h bar	10 lbs.

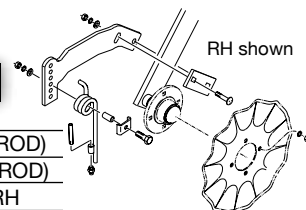


Shank Length

Part No.	Description	Weight
204-024D	1 1/2" X 12 5/8" Straight Shank	6 lbs.
204-025D	1 1/2" X 16" Straight Shank	8 lbs.
204-026D	1 1/2" X 22" Straight Shank	11 lbs.
820-132C	1 1/2" X 22" - 5" Offset Shank	13 lbs.
820-133C	1 1/2" X 26" - 5" Offset Shank	15 lbs.
820-183C	1 1/2" X 22" - 7" Offset Shank	17 lbs.

Zone Coulter to Vantage I Conversion Kits

Part No.	Description	Weight	Part No.	Description
204-377K	Bolt-On Fertilizer Tine Kit RH	19 lbs.	204-440K	Vantage I LH Liq. Fertilizer (ROD)
204-378K	Bolt-On Fertilizer Tine Kit LH	19 lbs.	204-441K	Vantage I RH Liq. Fertilizer (ROD)
			204-231K	Fert Drop Extn Kit (Clamp) RH
			204-323K	Fert Drop Extn Kit (Clamp) LH



If space is restricted for mounting units on toolbar, see page 14 for extension brackets.

For nozzles, see page 15.

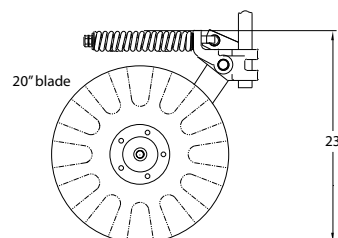
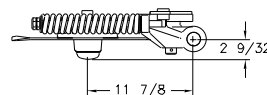
HEAVY-DUTY UTILITY COULTER

AVAILABLE TO FIT VIRTUALLY ANY TOOLBAR!



Features

- Available in right hand coulters only
- Increased down-pressure
 - 480 pounds preload
 - 1100 pounds maximum
- Heavy-duty swivel casting and spring assembly
- Heavy-duty greasable hub
- Double-lipped grease seal
- Tapered roller bearings
- Swivel capability
- Steel swivel limit collar
- Can fit 15", 16", 17", 18" or 20" coulters blades



Heavy-Duty Utility Coulter (base unit)

Part No.	Description	Weight
204-324L	Heavy Duty Utility Coulter RH only	41 lbs.

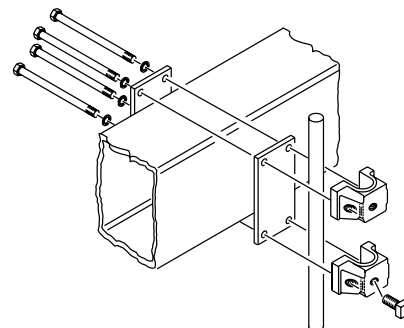
Note: Price of blades, clamp kits and shanks are not included in base unit. Order one of each to complete coulters.

Coulter Blades

Part No.	Description	Weight
820-018C	Narrow Fluted Blade – 17"	9 lbs.
820-074C	Narrow Fluted Blade – 20"	15 lbs.
820-082C	3/4" 12 Wave Blade – 17"	12 lbs.
820-115C	1" 13 Wave Blade – 20"	17 lbs.
820-156C	5/8" Turbo Coulter Blade (Patented) – 17"	12 lbs.
820-180C	5/8" Turbo Coulter Blade (Patented) – 20"	17 lbs.
820-205C	5/8" Turbo Coulter Blade (Patented) – 16"	12 lbs.
820-215C	5/8" Turbo Coulter Blade (Patented) – 18"	14 lbs.
820-326C	Coulter Blade (Fluted) – 16"	8 lbs.
820-327C	Coulter Blade (Turbo) – 15"	11 lbs.
820-331C	Coulter Blade (Fluted) – 15"	7 lbs.

Mounting Clamp Kits

Part No.	Description	Weight
204-017K	Fits 2.5" X 2.5" square bar	9 lbs.
204-018K	Fits 2" w X 6" h bar	12 lbs.
204-019K	Fits 3" X 3" diamond bar	16 lbs.
204-020K	Fits 3.5" X 3.5" diamond bar	17 lbs.
204-021K	Fits 4" X 4" square bar	11 lbs.
204-022K	Fits 3" w X 7" h bar	13 lbs.
204-023K	Fits 5" w X 7" h bar	14 lbs.
204-024K	Fits 7" X 7" square bar	14 lbs.
204-053K	Fits 3" w X 4" h bar	10 lbs.
204-054K	Fits 6" w X 4" h bar	11 lbs.
204-064K	Fits 3" X 3" square bar	9 lbs.
204-340K	Fits 3" w X 6" h bar	12 lbs.
204-060K	Fits 2" w X 4" h bar	10 lbs.

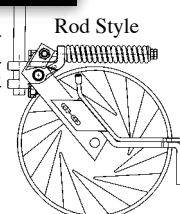


Shank Length

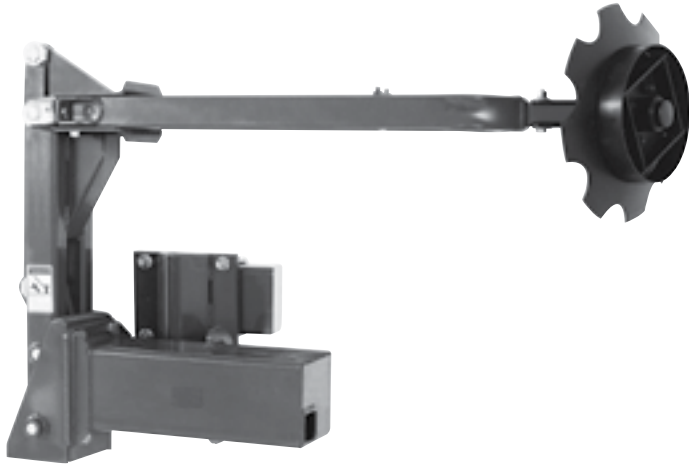
Part No.	Description	Weight
204-024D	1 1/2" X 12 5/8" Straight Shank	6 lbs.
204-025D	1 1/2" X 16" Straight Shank	8 lbs.
204-026D	1 1/2" X 22" Straight Shank	11 lbs.
820-132C	1 1/2" X 22" - 5" Offset Shank	13 lbs.
820-133C	1 1/2" X 26" - 5" Offset Shank	15 lbs.
820-183C	1 1/2" X 22" - 7" Offset Shank	17 lbs.

Utility Coulter to Vantage I-20 Conversion Kits

Part No.	Description
204-433K	Vantage I 20" Fertilizer COIL TINE
204-435K	Vantage I 20" Fertilizer (ROD STYLE)
204-231K	Fert Drop Extn Kit (Clamp) RH



FLAT FOLD MARKERS



Features

- Rugged field proven-design
- Hydraulic hoses, fittings and sequence valve included
- Break-away design to prevent damage
- Heavy-duty disk assembly
- Tapered roller bearings
- Notched blade
- Bolt on depth band

Flat Fold Markers

Part No.	Description
205-034A	15' Dual Flat Fold Markers - JD 750/1560/1590
205-035A	20' Dual Flat Fold Markers - JD 750/1560/1590
205-045A	25' Dual Flat Fold Markers - JD 455
205-051A	30' Dual Flat Fold Markers - JD 750/1560/1590
205-055A	30' Dual Flat Fold Markers - JD 455

COIL TINE CONVERSION KITS



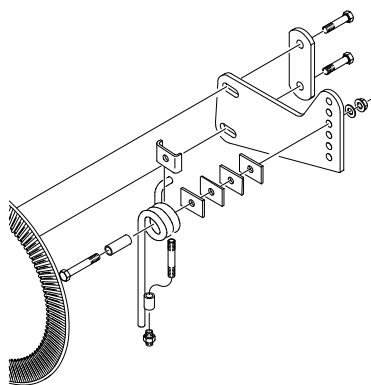
Features

- Converts Great Plains No-Till Coulter
- For low pressure fertilizer injection
- Converts most standard coulters
- Non-Plugging coil tine applicator
 - Eliminates troublesome knife
- Stainless steel nozzle assembly
- Can be used with any type of pump
- For best results use with a 5/8" or wider blade

Coil Tine Conversion Kit — For Liquid Fertilizer Application

Part No.	Description	Weight
204-232K	Coil Tine RH only – Liquid Fertilizer	13 lbs.
204-407K	Coil Tine LH – Anhydrous	18 lbs.
204-409K	Coil Tine RH – Anhydrous	18 lbs.

Order nozzles separately on page 15



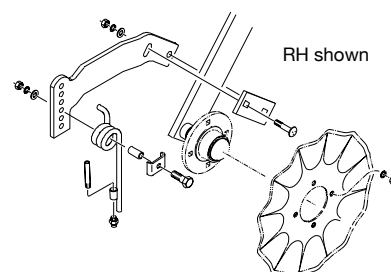
Features

- Converts Yetter 2975 series fertilizer coulter to the Coil Tine injection system
- For low pressure fertilizer injection
- Reduce plugging and constant adjustment
- Non-Plugging coil tine applicator
- Stainless steel nozzle assembly
- Can be used with any type of pump
- For best results use with a 5/8" or wider blade

Yetter Coil Tine Conversion Kit — For Liquid Fertilizer Application

Part No.	Description	Weight
204-240A	Yetter Coil Tine Conversion Kit – LH	12 lbs.
204-241A	Yetter Coil Tine Conversion Kit – RH	12 lbs.
204-231K	Fert Drop Extn Kit (Clamp) RH	
204-323K	Fert Drop Extn Kit (Clamp) LH	

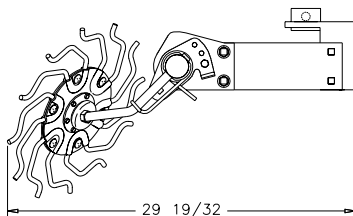
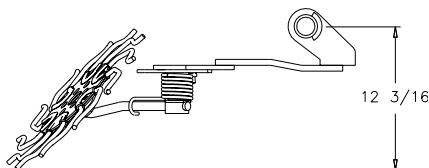
Order nozzles separately on page 15



TERRA-TINE™ ROW CLEANER

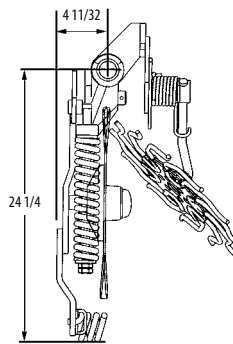


Frame Mount

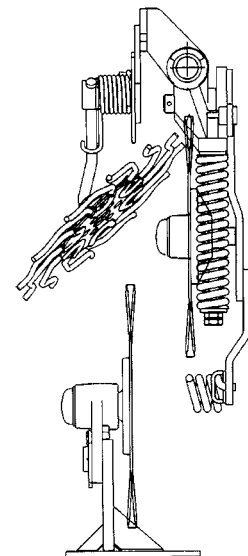


Features

- Works in conjunction with Fertilizer Coulter or can be mounted by itself on the planter fertilizer bar
- Fits the Ausherman GP Vantage I, Zone Coulter, and Yetter 2975 Fertilizer Coulter
- Clears a 7" to 9" path in front of row
- Floating arm design with adjustable spring pressure
- 15" and 16" diameter wheel
- Replaceable spring steel tine
- Frame mount Terra-Tine™ fits 5 X 7 or 7 X 7 bar



This illustration shows possible combinations of the Terra-Tine™, with a Vantage I and a Unit Mount Coulter



Terra-Tine™

Part No.	Description	Weight
207-001A	16" RH – Mounts w/ existing fertilizer coulter on 1 1/2" round shank	35 lbs.
207-002A	16" LH – Mounts w/ existing fertilizer coulter on 1 1/2" round shank	35 lbs.
207-023L	15" RH – Mounts w/ existing fertilizer coulter on 1 1/2" round shank	35 lbs.
207-024L	15" LH – Mounts w/ existing fertilizer coulter on 1 1/2" round shank	35 lbs.
207-025A	15" RH – 5w X 7h frame mount	35 lbs.
207-026A	15" LH – 5w X 7h frame mount	35 lbs.
207-027A	15" RH – 7 X 7 frame mount	35 lbs.
207-028A	15" LH – 7 X 7 frame mount	35 lbs.

Note: To mount Terra-Tine™ on the fertilizer bar by itself, order a standard 1 1/2" round shank and clamp kit for each row cleaner. Choose from clamp kits listed on page 5.

PLANTER SEED-LOK®

Features

- More uniform depth control
- Unmatched Seed-To-Soil contact
- Non-stick poly wheel
- 6" diameter wheel
- Fits John Deere-7000, 7100, 7200, 7300, White-6100, 5100, Kinze-1993 and older
- Will fit with depthomatic
- Seed-Lok® TIE UP
A cable tie-up system with an adjustable clevis to lift the Seed-Lok® off the ground in extremely wet conditions



Planter Seed-Lok®

Part No.	Description	Weight
206-010A	Seed-Lok® assembly for John Deere 7000, 7100 and Kinze	6 lbs.
206-011A*	Seed-Lok® assembly for John Deere 7200 and 7300	6 lbs.
206-017A**	Seed-Lok® assembly for White 6100	6 lbs.
206-018A**	Seed-Lok® assembly for White 5100	6 lbs.
206-020K	Lock-Up kit for John Deere 7000, 7100, 7200, 7300 and Kinze	1 lb.
206-021K	Lock-Up kit for White 5100 and 6100	1 lb.

* **Note:** Slight modification of the rotary scraper is required when installing on the John Deere 7200 and 7300

** **Note:** Seed-Lok® for White planters uses a 5-inch diameter wheel

THE ELIMINATOR

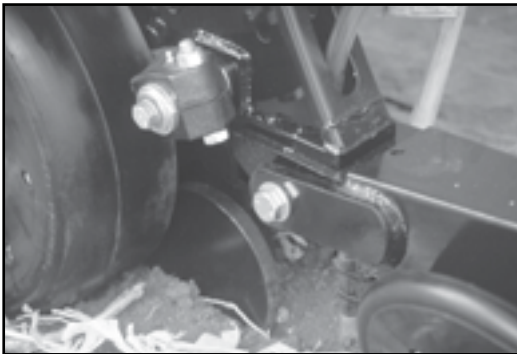
ELIMINATE SHIMS ... MUD BUILD UP ... ARM WEAR

Features

- Unique Split Arm Design
- Hardened Side Depth Arm
- Dual “O” Ring Bushing
- Case Hardened Eccentric Bushing
- Positive Lock Adjuster
- Available to fit Great Plains, John Deere, and Kinze row units

**The last planter side depth arm you will ever buy...
with all the adjustments you will ever need**

By utilizing our unique split arm design, the “Eliminator” from Great Plains far surpasses our competition. Our revolutionary design allows you quick and easy adjustment of the planter side depth arm. All adjustments are made without removing the arm or dealing with those greasy shims.



The ELIMINATOR

Part No.	Description
404-102A	Great Plains Planter with 5/8 attachment bolt (1998)
404-103A	Kinze Planter with 5/8 attachment bolt
404-104A	Great Plains Planter with 3/4 attachment bolt (1994-1997)
404-105A	John Deere Planter with set screw wheel attachment & small pivot bolt <i>(used on maximerge/maximerge 2 ser.# 024175 & up)</i>
404-106A	Kinze Planter with set screw attachment
404-107A	John Deere Planter with set screw wheel attachment <i>(used on maximerge plus 1997 & above)</i>
404-116A	John Deere Planter with set screw wheel attachment <i>(used on maximerge planters ser#024174 & below)</i>
404-117K	Rebuild Kit: Includes two “O” ring bushings & four “O” rings

MOUNTING ACCESSORIES

Extension Brackets & Reinforcement Brackets

Part No.	Description	Weight
204-031K	Reinforcement Bracket JD 7000 (7w X 5h and 7 X 7 frame)	18 lbs.
204-038K	10" Ext. Bracket - Fits 3" X 3" diamond bar Liquid Fertilizer	18 lbs.
204-039K	10" Ext. Bracket - Fits 3" X 3" diamond bar Dry Fertilizer	33 lbs.
204-351K	Kinze 5 1/2" Coulter Ext. Left Hand	25 lbs.
204-352K	Kinze 5 1/2" Coulter Ext. Right Hand	25 lbs.
204-353K	Kinze 9 1/2" Coulter Ext. Left Hand	32 lbs.
204-354K	Kinze 9 1/2" Coulter Ext. Right Hand	32 lbs.
204-430S	9 1/2" Front Bar Ext. Bracket Kit	15 lbs.
204-363K	14 5/8" Front Bar Ext. Bracket Kit	18 lbs.
204-364K	26" Front Bar Ext. Bracket Kit	27 lbs.
204-365K	31 1/2" Front Bar Ext. Bracket Kit	31 lbs.
204-357K	15 1/2" Front Bar Ext. Bracket Kit Right Hand	19 lbs.
204-358K	15 1/2" Front Bar Ext. Bracket Kit Left Hand	19 lbs.
204-372K	Telescoping Bracket Kit	53 lbs.
204-423A	7 X 7 Mainframe Extension Kit	31 lbs.

Front Bar Mounting Kits

Part No.	Description	Weight
204-025K	Front Bar Kit (10" Ext.) - Case IH 800-900, 4-row	149 lbs.
204-026K	Front Bar Kit (10" Ext.) - Case IH 800-900, 6-row	222 lbs.
204-037K	Case IH 800-900, 8-row & 12-row narrow 3 point	396 lbs.

Mounting Clamp Kit - for 1 1/2" Round Shank

Part No.	Description	Weight
204-017K	Fits 2.5" X 2.5" square bar	9 lbs.
204-018K	Fits 2" w X 6" h bar	12 lbs.
204-019K	Fits 3" X 3" diamond bar	16 lbs.
204-020K	Fits 3.5" X 3.5" diamond bar	17 lbs.
204-021K	Fits 4" X 4" square bar	11 lbs.
204-022K	Fits 3" w X 7" h bar	13 lbs.
204-023K	Fits 5" w X 7" h bar	14 lbs.
204-024K	Fits 7" X 7" square bar	14 lbs.
204-053K	Fits 3" w X 4" h bar	10 lbs.
204-054K	Fits 6" w X 4" h bar	11 lbs.
204-064K	Fits 3" X 3" square bar	9 lbs.
204-340K	Fits 3" w X 6" h bar	12 lbs.
204-060K	Fits 2" w X 4" h bar	10 lbs.

Mounting Clamp Kit - for Flat Shank

Part No.	Description	Weight
204-220K	Fits 2.5" X 2.5 square bar	6 lbs.
204-221K	Fits 3" X 3" square bar	6 lbs.
204-222K	Fits 4" X 4" square bar	8 lbs.
204-223K	Fits 2" w X 6" h bar	13 lbs.
204-224K	Fits 7" X 7" square bar	11 lbs.
204-225K	Fits 3" X 3" diamond bar	16 lbs.
204-226K	Fits 3.5" X 3.5" diamond bar	18 lbs.
204-228K	Fits 5" w X 7" h bar	11 lbs.
204-227K	Fits 6" w X 4" h bar	8 lbs.
204-244K	Fits 3" w X 4" h bar	9 lbs.
204-341K	Fits 3" w X 6" h bar	9 lbs.

MOUNTING ACCESSORIES

[CONTINUED]

Mounting Shanks

Part No.	Description	Weight
204-013D	1 1/2" X 26" Straight Shank	13 lbs.
204-024D	1 1/2" X 12 5/8" Straight Shank	6 lbs.
204-025D	1 1/2" X 16" Straight Shank	8 lbs.
204-026D	1 1/2" X 22" Straight Shank	11 lbs.
807-124C	21" Flat Shank – 16° angled mount for toolbar application	19 lbs.
820-132C	1 1/2" X 22" – 5" Offset Shank	13 lbs.
820-133C	1 1/2" X 26" – 5" Offset Shank	15 lbs.
820-183C	1 1/2" X 22" – 7" Offset Shank	17 lbs.

Coulter Blades

Part No.	Description	Weight
820-018C	Narrow Fluted Blade – 17"	9 lbs.
820-074C	Narrow Fluted Blade – 20"	15 lbs.
820-082C	3/4" 12 Wave Blade – 17"	12 lbs.
820-093C	18" Coulter Blade – for Vantage II fertilizer coulters	17 lbs.
820-115C	1" 13 Wave Blade – 20"	17 lbs.
820-116C	5/8" 24 Wave Blade – 17"	12 lbs.
820-156C	5/8" Turbo Coulter Blade (Patented) – 17"	12 lbs.
820-180C	5/8" Turbo Coulter Blade (Patented) – 20"	17 lbs.
820-202C	5/8" Turbo Coulter Blade (Patented) for John Deere 5 Hole– 16"	11 lbs.
820-203C	5/8" Turbo Coulter Blade (Patented) for John Deere and Kinze 6 Hole– 16"	11 lbs.
820-205C	5/8" Turbo Coulter Blade (Patented) – 16"	11 lbs.
820-215C	5/8" Turbo Coulter Blade (Patented) – 18"	14 lbs.
820-220C	3/4" Wave Blade	14 lbs.
820-224C	5/8" Turbo Coulter Blade (Patented) for John Deere 6 Hole– 16"	11 lbs.
820-326C	Coulter Blade (Fluted) – 16"	8 lbs.
820-327C	Coulter Blade (Turbo) – 15"	11 lbs.
820-331C	Coulter Blade (Fluted) – 15"	7 lbs.



Turbo Coulter

3/4" x 17"
12 Flutes5/8" x 17"
24 Flutes5/16" x 17"
50 Flutes

Nozzles

Part No.	Description	Part No.	Description
828-036C	Nozzle 0002	828-043C	Nozzle 0015
828-037C	Nozzle 0003	828-044C	Nozzle 0020
828-038C	Nozzle 0004	828-045C	Nozzle 0030
828-039C	Nozzle 0005	828-046C	Nozzle 0040 – recommended for Squeeze Pumps
828-040C	Nozzle 0006	828-054C	Nozzle 0050
828-041C	Nozzle 0008	828-055C	Nozzle 0060
828-042C	Nozzle 0010	828-056C	Nozzle 0070



FINANCE IT *with*
Great Plains Acceptance Corporation

0105



"We lead because we listen."

Great Plains Manufacturing, Inc.
P.O. Box 5060
Salina, KS 67402-5060

PRSRT STD
US POSTAGE
PAID
DES MOINES IA
PERMIT NO 589